



INTELLIGENCE
TO BUSINESS





CORPORATE OVERVIEW

NEXCEL is a leading Systems Integrator focusing on the design, deployment and maintenance of ICT and ELV solutions (IP based systems and network infrastructure). We take pride in being one of the fastest growing ELV & ICT Company in the Kingdom of Bahrain having achieved remarkable growth in a short span and contributing significantly to the development of the State.

Established in 2014, NEXCEL delivers technology contracting under many verticals including Supply and installation of IT Equipments, Network Infrastructure, Structured cabling, Telephony services, Wireless services, Electrical Services, CCTV solutions, Access control systems, etc. This unique business model provides a highly technical and well-diversified installation force, which combined, enables us to handle larger and more complicated projects. Much of the labour force is cross-trained under multiple disciplines enabling labour to flow between projects to areas most needed at any given time.

We partner with the ICT Industry's leading manufacturers of proven technologies to deliver high-quality solutions to our clients. NEXCEL understands that Information Technology and Networking are critical to today's security infrastructure and we ensure our solutions incorporate today's standards.

Beyond its technology NEXCEL boasts the strongest team of project managers, technicians, and support personnel available in the industry and promotes an innovative and entrepreneurial culture within the organization's team in order to seamlessly facilitate the completion of any project. In forming a partnership with our client, we gain a unique understanding of our client's specific requirements as they evolve, thereby enabling us to promptly evaluate and adjust existing solutions to meet the changing needs of our clientele.

OUR VISION

In order to achieve our vision, our goals are:

- To continue to inspire confidence from our stakeholders by delivering Successful and safe projects.
- To continue to provide and develop strong leadership with integrity.
- To constantly strive for continuity of works, taking pride in our aim of delivering all projects safely, on budget and ahead of program, ultimately exceeding client expectation.
- To respect the well-being of our workers and protect the environment, maintaining our 'zero harm' record.
- To recognize and encourage our employees, providing skills development opportunities to help them develop in their careers.





OUR MISSION

At NEXCEL, our mission extends beyond the realms of design, deployment, and maintenance of ELV and ICT solutions. We are dedicated to serving various sectors, including Commercial, Residential, Industrial Buildings, Hospitals, High Rise Towers, Site offices, Schools, etc.

Commitment to Excellence:

Committed to delivering top-notch quality products and services, our focus is on achieving and maintaining excellence in all aspects of our operation. Recognizing our responsibility, we are determined to consistently meet and exceed our clients' expectations, while also prioritizing the safety of our employees, clients, visitors, and third parties.

Corporate Governance and Accountability:

Embedded within our mission is a distinct emphasis on Corporate Governance and Account Management. Upholding the highest standards of ethical conduct, transparency, and accountability, we ensure that our corporate practices reflect the values of integrity and responsibility.

Strategic Account Management:

Simultaneously, our dedication to account management is aimed at adding value for our clients through innovation, foresight, and aggressive performance.

Solutions





ITS Infrastructure & Telecommunication Solutions.

NEXCEL provides professional and complete range of ITS Infrastructure & communication solutions to a variety of sectors. We design and implement the latest in Information & Communication Technologies. Our custom designs are tailored to suit your business and give you a competitive edge through value based service integration and Solution Services.

To deliver successful integration of complex systems requires both specialized skills and the right level of experience. Our team consists of highly certified professionals, many with over 10 years of experience in the IT industry.

Strong Communication and network foundation is the key to business agility and competitiveness in the technology-dependent Internet era.

Structured cabling solutions (copper & fiber optic networks)

NEXCEL experts in providing well-designed, carefully implemented structured cabling systems that meet your data and communications needs. We specialized in the installation of copper network cabling to ensure long term performance system integrity, and investment protection.

NEXCEL's specialists are experienced in carrying out major Fiber Optic network installations with all the detailed planning and resource utilization required for such projects. Having successfully designed and implemented many structured cabling projects in Qatar, you can be assured that you would have a very reliable network infrastructure for years to come.

NEXCEL as a certified installer for many of the leading brands like Schnieder, Corning, R&M, Nexans, 3M, APC etc., we can warranty the projects as per manufacture standards from 15 to years.

We use calibrated and state of the art modern Cabling equipment's from leading manufactures like Fluke, EXFO, Fujikura, etc. We use our trained and certified technicians for splicing, terminations, cable laying etc.

Our installation teams are fully conversant and qualified with the latest installation practices and work to a quality-assured procedure ensuring all installations are carried out to a consistently high standard. Whether you need just one additional outlet or you require thousands installed, we have the knowledge, experience and expertise to ensure your installation is carried out to your specifications and with the same level of service and professionalism regardless of the size of the project or service call.





Telephone Block Wiring

The telecommunications industry has become increasingly diverse with the types and number of services that are available, as well as the types and number of service providers.

NEXCEL offers all kind of telephony services and we are the one stop place if you wish to change phones, add an extension, or install your own wiring system. We are authorized dealers of GrandStream, Avaya, & NEC PABX Systems.

NEXCEL undertakes Telephone block wiring as per ICT standards.



Complete DATA Center Infrastructure Solution

IT operations are a crucial aspect of most organizational operations around the world. A data center is a facility used to house computer systems and associated components, such as telecommunications and storage systems. If a system becomes unavailable, company operations may be impaired or stopped completely. A data center must therefore keep high standards for assuring the integrity and functionality of its hosted computer environment. This is accomplished through redundancy of mechanical cooling and power systems serving the data center along with fiber optic cables, environmental controls (e.g., air conditioning, fire suppression) and various security devices.

NEXCEL provides consulting, planning and implementation of DATA centers of any size in different TIER levels. We design cooling / power requirements for DATA center which includes DATA center Precision A/Cs (Liebert), UPS systems (APC, Tripplite), Remote monitoring systems (IMS 4000), FM200 Fire systems, Security (Access control and CCTV monitoring), Generator, and other design concerns of DATA center.

NEXCEL specializes in the infrastructure installation of data centre including raised/access flooring system, fire rated ceilings, fire rated doors, fire rated claddings, complete electrical, technology and mechanical installations.





UPS Solutions

A UPS is typically used to protect hardware such as computers, data centers, telecommunication equipment or other electrical equipment where an unexpected power disruption could cause injuries, fatalities, serious business disruption or data loss.

NEXCEL provide Supply and installation of variety of UPS models and sizes. We provide both single phase and 3 phase solutions. We are specialized in design of parallel redundancy solutions and other mission critical requirements.

As TRIPP.LITE (a global manufacturer of power and connectivity solutions) premier partner with CAP certification; NEXCEL provide all products and services offered by TRIPPLITE in the Kingdom of Bahrain.

TRIPP-LITE

APC
Legendary Reliability™

VERTIV

PBX Systems

A private branch exchange (PBX) is a telephone exchange or switching system that serves a private organization and performs concentration of central office lines or trunks and provides intercommunication between a large number of telephone stations in the organization.

An IP PBX handles voice signals under Internet protocol, bringing benefits for computer telephony integration (CTI).

NEXCEL specializes in supply and installation of PBX systems from multi vendors. NEXCEL provides IP telephony solutions of NEC, Grandstream, ALCATEL, HUAWEI, PANASONIC and AVAYA.

NEC



alcatel



Panasonic

AVAYA

Fanvil





Video/Voice Conferencing Solutions

Effective video and voice conferencing solutions revolve around the core principles of seamless communication, reliability, and accessibility. These systems address the critical aspects of who participates, where the meetings occur, and when they take place.

At NEXCEL, we specialize in designing and implementing diverse video and voice conferencing solutions sourced from various reputable vendors. Our offerings range from standalone solutions for small-scale interactions to sophisticated networked setups, incorporating multiple endpoints, advanced audio and video peripherals, and robust collaboration tools. Whether your organization is a large enterprise or a nimble startup, we recognize the significance of facilitating smooth access to virtual meeting spaces.

Understanding that each business operates uniquely, we tailor our solutions to meet individual needs and requirements. Our commitment to enhancing your communication infrastructure is unwavering, ensuring that your team can connect effectively, regardless of their physical locations.

Jabra

logitech

rapoo

Polycom

Yealink

Access Control, Time and Attendance Security Systems

Physical access control is a matter of who, where, and when. An access control system determines who is allowed to enter or exit, where they are allowed to exit or enter, and when they are allowed to enter or exit.

NEXCEL designs and implements different access control systems based on solutions from multiple vendors. These can include standalone card readers up to a complicated networked solutions consisting of tens of card and biometric readers, door controllers, turnstiles, road blockers and sensors. Whether your organization is large or small, the importance of managing access to your premises cannot be overemphasized. Therefore at NEXCEL we design our solutions based on the understanding that every organization or company operates differently, and each has individual needs and requirements.

A time and attendance system enables an employer to have full control of all employees working hours. It helps control labour costs by reducing over-payments, eliminating manual processes.

NEXCEL provide time attendance systems from ZKTECO, PAXTON, Suprema, ACTATEK and other vendors.

HIKVISION

dahua
TECHNOLOGY

ZKTeco

Paxton

Suprema

ACTatek





GPS Trackers and Solutions

Nexcel offers a wide range of GPS trackers and complete fleet management solutions.



Sensors

- Seat belt sensors
- Temperature sensors
- Humidity sensors
- Fuel sensors
- RFID tags
- Eye sensors

These sensors can be integrated with our fleet management solutions

Solutions

- Complete Fleet management solution
- Service and maintenance solution
- Delivery Management solution
- School solution

Nexcel also provides additional safety features like SOS buttons, dash cameras, dual cameras, Adas, Magnetic iButton Key, iButton reader and smoke detection systems.

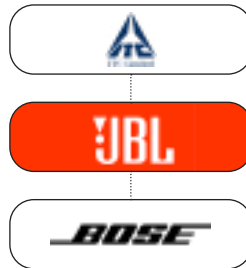
Public Addressing System (PA System)

A Public Addressing System (PA System) is crucial for effective communication in various settings. The success of a PA System relies on its ability to address specific aspects such as where, when, and how information is conveyed.

NEXCEL specializes in designing and implementing state-of-the-art PA Systems tailored to the unique needs of diverse environments. Our solutions encompass a range of products, from standalone speakers to sophisticated networked setups, ensuring seamless communication.

Our PA Systems feature components from renowned vendors, ensuring top-notch quality and performance. We collaborate with industry-leading brands, such as BOSE, JBL, ITC, and others, to provide a comprehensive range of options for our clients.

Effective communication is at the heart of every successful organization. With NEXCEL's expertise in PA Systems, you can trust that your communication needs will be met with precision and reliability. Whether it's a simple announcement or a complex multi-zone setup, we have the solutions to enhance your communication infrastructure.





CCTV and Security Surveillance

NEXCEL has extensive experience in designing and installation of different CCTV security surveillance solutions. By carefully assessing our clients' requirements, we design, install and maintain cost-effective security systems which achieve and exceed Our clients' expectations.

NEXCEL has successfully implemented tens of large and small CCTV systems including analog and IP-based solutions from vendors such as Bosch, Axis, Dahua, HIKVision, Samsung, etc.

HIKVISION

dahua
TECHNOLOGY

AXIS
COMMUNICATIONS

SAMSUNG

BOSCH

CATV and IPTV

(Satellite Analog Cable TV & Satellite IPTV Solutions)
Cable television (CATV) is a system of delivering television programming to paying subscribers via radio frequency (RF) signals transmitted through coaxial cables or light pulses through fiber-optic cables and Internet Protocol television (IPTV) is a system through which television services are delivered using the Internet protocol suite over LAN or the Internet.

NEXCEL provides turnkey, centralized, professional Satellite CATV and IPTV systems using top-of-the-line equipment from industry leading manufactures.

Construction Time-lapse cameras

Time lapse construction camera lets you know what's happening on your job-site 24/7, even when you're not there. It's easy to use because everything comes in one complete package. All you need is a device with Internet access, and you'll start doing things you never thought possible as

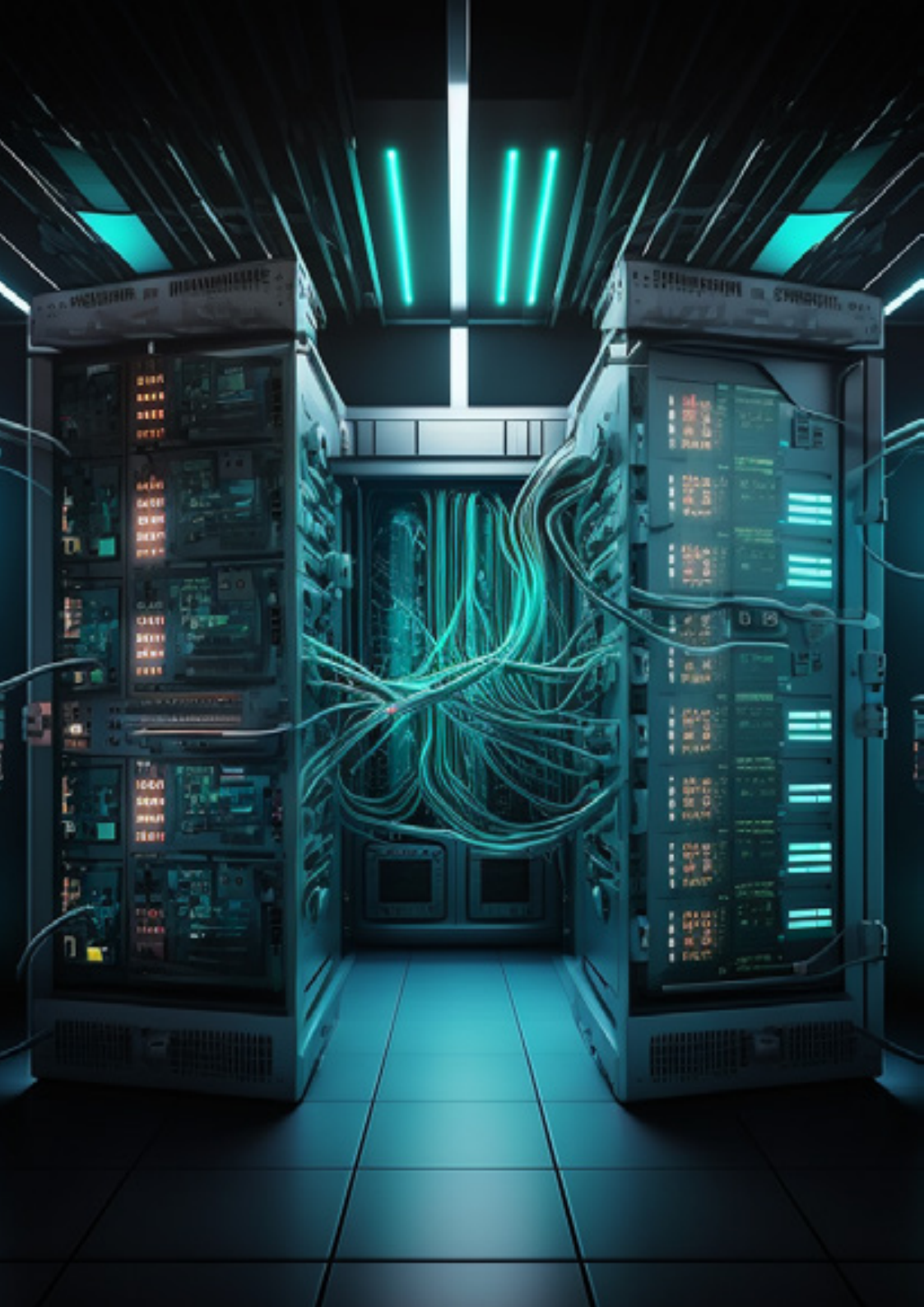
Increase efficiency, Reduce travel costs, Improve communications, Enhance project management, Increase client transparency, provide a firewall against warranty claims, insurance issues and contract disputes, and Produce time-lapse movies for marketing and public relations.

NEXCEL provide Time lapse solution on permanent or rental basis.

HIKVISION

dahua
TECHNOLOGY





Electrical Wiring

NEXCEL provides Electrical wiring, glanding and termination of Electrical cable, Panels, DBS and sockets. We are specialized in designing and installation of electrical requirements for Small wiring closets to Big DATA centres.



D-Link

Schneider
Electric

AC AMERICAN
Cable Company

Fire Alarm & PAGA Solution

Fire Alarm solutions are a key element in any safe facility. NEXCEL designs, procures, installs and maintains fire alarm solutions that would fully match your business sister requirements through Our concern.



JBL

BOSE





ERP (Enterprise resource planning) Software & Solution

ERP provides an integrated view of core business processes, often in real-time, using common databases maintained by a database management system. ERP systems track business resources and the status of business commitments. ERP facilitates information flow between all business functions, and manages connections to outside stakeholders.

NEXCEL partners with SAGE (One of the leading software products and services provider incorporated in India). SAGE Systems is a provider of ERP, Human Capital Management and Aviation Maintenance & Engineering (M&E) & Maintenance Repair & Overhaul (MRO) Software.

Software development

NEXCEL partners with specialized companies for proprietary software development. Software can be developed to meet specific needs of a specific client/business, to meet a perceived need of some set of potential users, or for personal use.

NEXCEL provides Custom software programming, on all major software platforms including the latest Microsoft .Net, ORACLE.



Interactive Screen, Digital Signage & Pixel LED

Our expertise lies in designing and implementing advanced systems that redefine visual communication. We source and integrate cutting-edge technologies to provide Interactive Screens that facilitate engaging user interactions in various contexts, from educational settings to corporate environments. The Digital Signage solutions we offer empower businesses to deliver dynamic and targeted content, enhancing brand visibility and customer engagement.

In the realm of Pixel LED displays, NEXCEL stands at the forefront, providing vibrant and customizable solutions. Our Pixel LED displays are characterized by their versatility and the ability to create visually stunning presentations, advertisements, and information displays. By partnering with leading manufacturers such as LG, Samsung, and Absen, we ensure that our clients receive top-notch quality and innovation.

Whether you seek interactive engagement, impactful digital messaging, or stunning visual displays, NEXCEL tailors its solutions to meet the specific needs of diverse industries. Elevate your communication strategies with our state-of-the-art Interactive Screen, Digital Signage, and Pixel LED solutions, designed to leave a lasting impression on your audience.



Services



Extended warranty, Service and Ongoing Maintenance Agreements

An extended warranty is coverage for electrical or mechanical breakdown. It may or may not cover peripheral items, wear and tear, damage by computer viruses, normal maintenance, accidental damage, or any consequential loss. The indemnity is to cover the cost of repair and may include replacement if deemed uneconomic to repair.

NEXCEL provides extended warranty support and ongoing service and maintenance contracts as per client's requirements.

NEXCEL provides different service plans (Basic, Advances and Plus) considering the client's support demands which include 24/7 support within 4 hours response time. We can tailor maintenance options to fit your requirements for all infrastructure products and services.

We offer a wide variety of options designed to help keep your infrastructure up and running

W / T H[®]
secure





Help Desk, Technical support & outsourcing services

NEXCEL: a help desk provider intended to provide the customer with information and support related to the client's requirements. We troubleshoot problems or provide guidance about daily infrastructure problems such as network administration, component installation, configuration, system imaging, and advanced configuration of computers, electronic equipment, or software.

NEXCEL provides outsourcing services for reducing cost and improving quality for our clients. By outsourcing to us; we help our clients to perform well on their core competencies, from which cost is reduced and products stay in high quality. We help to mitigate shortage of skill or expertise in the areas where they want to outsource.

Technology Equipment Rental

As businesses around the world scramble to keep up with the latest technology, NEXCEL provide technology equipment rental for short term or long term period to organizations nationwide.

Whether you are presenting at an exhibition, or attending a conference, NEXCEL can ensure that your business looks and operates at its fullest potential. We offer a variety of rental solutions by the day, week or month to meet your unique equipment rental requirements. Our technology experts understand all types of business segments; from Corporate and Professional Services, to Events and Training, Government, Education, Banking and much more.



Products



Networking Products (Active)

We Provide Complete networking hardware including LAN/WAN & P2P products, ISDN, ADSL, VPN, Switches, Routers, Firewall, Wireless and Network gate-ways. We partner with major brands like CISCO, HP, Linksys, and Ubiquiti Networks.

We provide complete firewall solutions from Fortinet, Cyberoam and Sonicwall. Our product range includes industrial switches and media converters from AMG and allied Telesis.

Networking Products (Passive)

NEXCEL having alliance with most of the leading manufacturer of passive networking items. We are certified with Schneider, iConnect, Panduit, Nexans, R&M, corning, 3M, Systemax, etc. We can supply any kind of passive cabling products from leading manufactures.

We are authorized distributor for TOTEN Racks and cabinets in the state of Qatar. We keep stock of all range of products from TOTEN, Aston, Cheetah, Dell, HP, IBM etc.





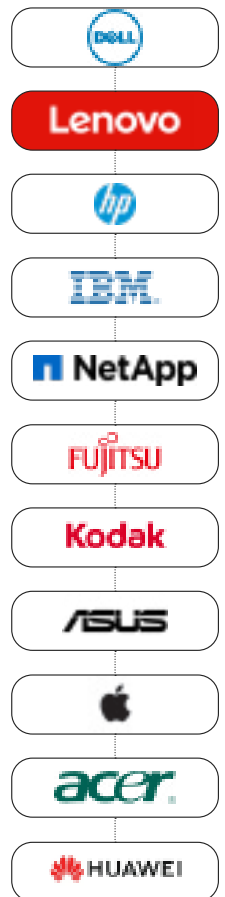
Computer Hardware, Software and Peripherals

Computers, Servers, Storage, Printers, and Scanners: NEXCEL provides sales and support of Computer hardware from multiple corporate vendors - DELL, HP, Lenovo, etc.

NEXCEL specialized in providing design and configurations of Servers (DELL, HP, and IBM) as per client's requirements. We supply Printers, Scanners, Projectors and all other IT equipment hardware as per client request.

Computer data storage is a technology consisting of computer components and recording media used to retain digital data. It is a core function and fundamental component of computers. NEXCEL provides storage solutions (SAN, NAS, etc.) from NetApp, Buffalo, HP and IBM.

Scanners optically scan images, printed text, handwriting, or an object, and converts it to a digital image. NEXCEL having alliance with major scanner manufactures like FUJITSU, KODAK, HP, etc.



Software licensing

A software license is a legal instrument governing the use or redistribution of software. Software license grants an end-user permission to use one or more copies of software in ways where such a use would otherwise potentially constitute copyright infringement of the software owner's exclusive rights under copyright law.

NEXCEL specialized in providing Software licensing from Microsoft, Autodesk, Primavera, Adobe, Symantec, Nitro, Oracle, WinZip, etc.

Antivirus Licenses:

Antivirus software detects and removes computer viruses, malware, and provides protection from other computer threats such as infected and malicious URLs, spam, scam and phishing attacks, online identity (privacy), online banking attacks, social engineering techniques, Advanced Persistent Threat (APT), botnets DDoS attacks.

NEXCEL provide Antivirus solutions from major vendors like Kaspersky, McAfee, ESET

Consumables and accessories:

Consumables are products that consumers use recurrently, such products as paper, pens, file folders, post-it notes, computer disks, and toner or ink cartridges. A peripheral device is generally defined as any auxiliary device such as a computer mouse, keyboard, image scanners, tape drives, microphones, loudspeakers, webcams, and digital cameras.

NEXCEL provide supply of Computer accessories and consumables of all brands.





Supply of office automation equipment's

Office automation helps in optimizing or automating existing office procedures like transfer data, mail and even voice across the network. All office functions, including dictation, typing, filing, copying, fax, Telex, microfilm and records management, telephone and telephone switchboard operations, fall into this category.

We provide Supply and installation of photocopier, Printers & other peripherals from XEROX, KONICA MINOLTA, BROTHER, HP, Canon, Toshiba and many other leading brands.

TOSHIBA



brother

Canon

xerox

 **Konica**



Partnership for quality

Working together to create value for our customers - that's the fundamental aim of NEXCEL.

With our existing network of high-quality partners, we provide full-service support to our mutual customers as they optimize their IT processes. Together, we deliver professional business services and focused IT that maximizes business performance.

We value the opportunity to serve you and are committed to assist you for your technology demands.

We are constantly seeking to improve the services we provide. Our experienced and responsive staff, along with constant innovations in technology, plan, design, and state-of-the-art reporting, ensures that our clients will be more satisfied.

Thanking you and looking forward to be of service.

NEXCEL



Tel: +966556088894

Saudi Arabia

Al Khobar: Level #21, Street #3036 King Fahad Road, Block #34424, Al Khobar Gate Tower

Riyadh: Level #18, King Fahad Road, Block #30194, Al Faisaliah Tower

Jeddah: Level #26, King's Road Tower, King Abdul Aziz Road, Block #21499

Showroom: Store #6574, Street #2759, Ibn Sina, Alkhobar #34627 – Near DHL Headoffice Khobar

Mob: +973 33945666

Kingdom of Bahrain

Tel: +973 17311036 - 13633255

Fax: +973 17310648

PO. Box: 32986

Office: Suite #219, Street #18, Block #320, Exhibition Road, Bahrain

Website : www.nexcel.me

